

PILOT OPERATED SOLENOID VALVE CEME 2/2 ESM 87 NO

MAIN CHARACTERISTICS

The ESM 87 solenoid valve is a 2/2 piloted valve dedicated to the shut off of clean and non-aggressive fluids. The operation way is normally opened. The standard construction includes quality brass body and cover, internal parts in stainless steel and diaphragm is NBR. This solenoid valve is also available with several diaphragm materials and various coil voltages. The ESM 87 W version 1/2 ", 3/4 " and 1 " have the French homologation ACS for the drinking water.



AVAILABLE MODELS

ESM87 : G 3/8" to G 3"

ESM87W : G 1/2" to G 1"

Diaphragm : NBR, EPDM et FPM.

Voltages : See on page 3.

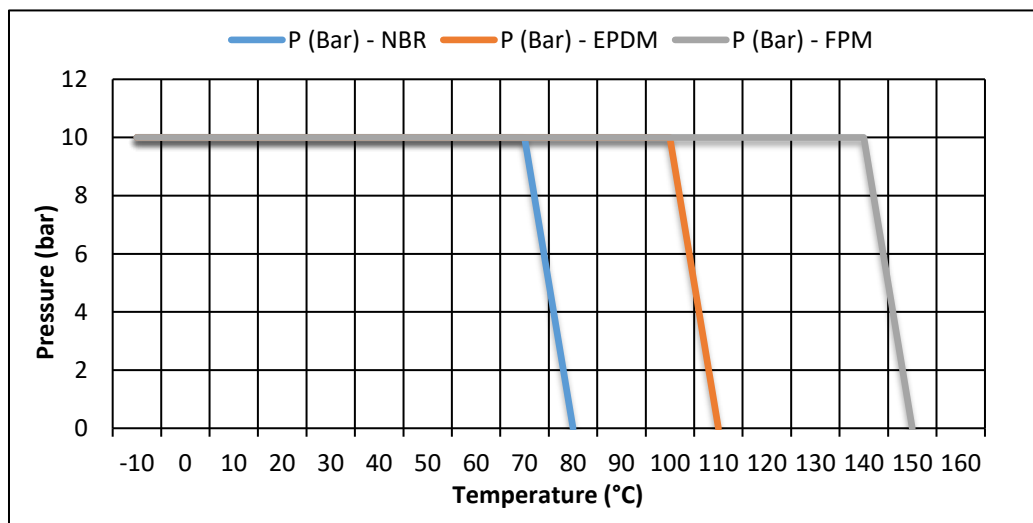
BSP Screwed end connections.

LIMITS OF USE

Electric protection	IP 65		
Max allowed fluid pressure : PS	0 - 10 bar		
Max allowed fluid temperature : TS	NBR	EPDM	FPM
	-5°C / +80°C	-5°C / +110°C	-5°C / +150 °C
Room temperature	-10°C / +80°C		



* In direct current, over 40°C, the maximum differential pressure can be reduced.



Modifications reserved



SECTORIEL S.A.
45 rue du Ruisseau
38290 SAINT QUENTIN-FALLAVIER – FRANCE
Tél : +33 4 74 94 90 70 – Fax : +33 4 74 94 13 95
www.sectoriel.fr / Email : sectoriel@sectoriel.fr

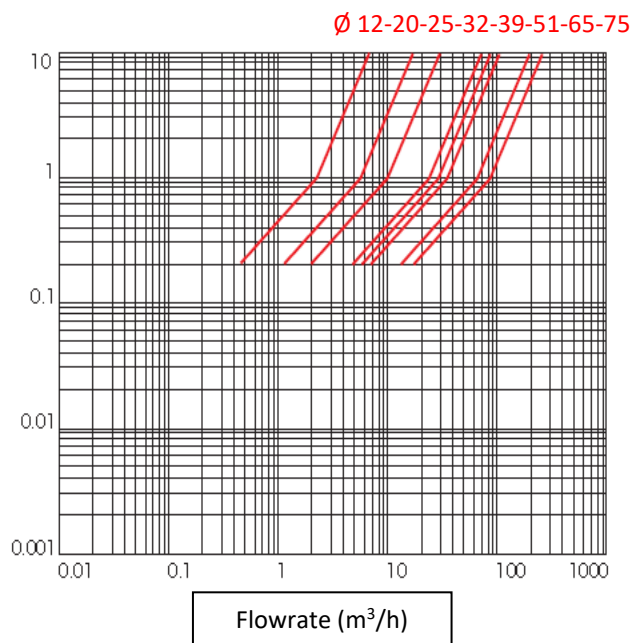
Pages	1/5
Ref.	FT8700 ENG
Rev.	03
Date	05/2019

PILOT OPERATED SOLENOID VALVE CEME 2/2 ESM 87 NO

REGULATIONS AND STANDARDS OF CONSTRUCTION

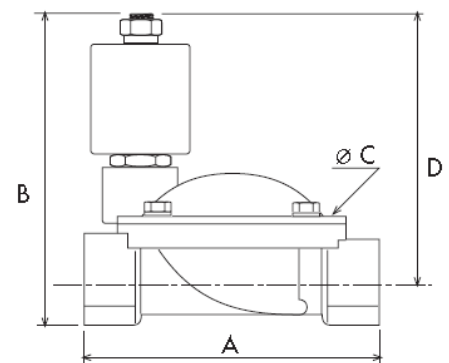
Item	Standard	Item	Standard
Pressure Equipement Directive CE 2014/68	3/8" to 1" : A3 § 3 excluded	Brass materials	EN 1503-4
	1"1/4 to 3" : category I		
Low voltage directive CE 73/23	category I	BSP thread	ISO 228
Connector	DIN 43650	Drinking water (ESM87 W)	1/2" : 10 ACC LY 343
			3/4" : 10 ACC LY 343
			1" : 10 ACC LY 343

PRESSURE LOSS DIAGRAM (BAR)




DIMENSIONS (mm) AND WEIGHT (kg)

DN	A	B	C	D	Weight (Kg)
G 3/8"	61	95	48	83	0,6
G 1/2"	61	95	48	83	0,6
G 3/4"	87	107	69	91	1
G 1"	100	113	80	93	1,2
G 1" 1/4	131	128	112	101	2,8
G 1" 1/2	146	135	128	105	3,5
G 2"	174	151	146	114	4,8
G 2" 1/2	245	186	184	140	11,4
G 3"	250	196	184	145	12



Modifications reserved

	SECTORIEL S.A. 45 rue du Ruisseau 38290 SAINT QUENTIN-FALLAVIER – FRANCE Tél : +33 4 74 94 90 70 – Fax : +33 4 74 94 13 95 www.sectoriel.fr / Email : sectoriel@sectoriel.fr	Pages	2/5
		Ref.	FT8700 ENG
		Rev.	03
		Date	05/2019

PILOT OPERATED SOLENOID VALVE CEME 2/2 ESM 87 NO

HYDRAULIC CHARACTERISTICS

DN	Port (mm)	Kv (m ³ /h)	Min diff. pressure (bar)	Max diff. pressure (bar)	Coil	Operating time
G 3/8"	10	1,86	0,3	10	B 6	20-60 ms
G 1/2"	12	2,1	0,3	10		
G 3/4"	20	5,7	0,3	10		
G 1"	25	9,6	0,3	10		
G 1" 1/4	32	22	0,3	10		
G 1" 1/2	39	27	0,3	10		50-80 ms
G 2"	51	35	0,3	10		
G 2" 1/2	65	63	0,3	10		
G 3"	75	83	0,3	10		

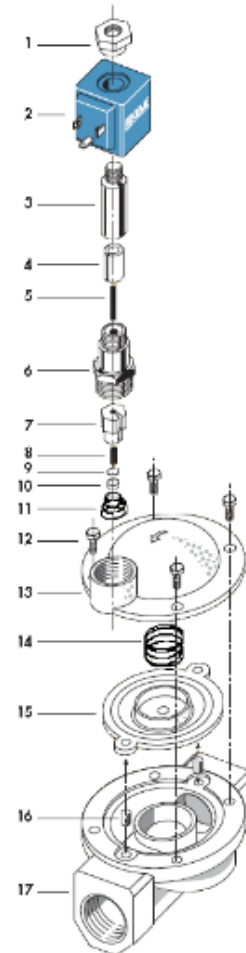
ELECTRIC CHARACTERISTICS

Coil classified H. Duty 100%. Connecting by connector T30.

Coil	Current	Available voltages (V)						Frequency		Power consumption	
		12	24	48	110	230	400	50 Hz	60 Hz	Holding	Rush
B 6	AC Coil	12	24	48	110	230	400	50 Hz	60 Hz	15 VA	25 VA
	DC Coil	12	24	48	110					16 W	

CONSTRUCTION

N°	Item	Material
1	Lock nut	Zincated steel
2	Coil	PBT + 30% G.F.
3	Tube guide	Stainless steel AISI 430
4	Plunger	Stainless steel AISI 430
5	Spring	Stainless steel AISI 430
6	Tube guide	Stainless steel AISI 430
7	Shutter	Stainless steel AISI 303
8	Spring	Steel
9	Support	Stainless steel
10	Seal	NBR
11	Spring	Steel
12	Screw	Stainless steel
13	Cover	Brass CW 617 N
14	Spring	Steel
15	Diaphragm	NBR/EPDM/EPDM KTW/FPM
16	Bush	Brass
17	Body	Brass CW 617 N



Modifications reserved



SECTORIEL S.A.
45 rue du Ruisseau
38290 SAINT QUENTIN-FALLAVIER – FRANCE
Tél : +33 4 74 94 90 70 – Fax : +33 4 74 94 13 95
www.sectoriel.fr / Email : sectoriel@sectoriel.fr

Pages	3/5
Ref.	FT8700 ENG
Rev.	03
Date	05/2019

PILOT OPERATED SOLENOID VALVE CEME 2/2 ESM 87 NO

USE ON DRINKING WATER

The W version of the ESM 87 in diameters 1/2 ", 3/4 " and 1 " can be used on the networks of drinking water. It has the French homologation ACS.

RISK OF CONDENSATION

In case of use in a wet area or on a network of cooling fluid, there is a risk of condensation between the coil and the pilot-tube. This phenomenon can cause damage to the coil. Consult for other alternative solution.

RISK OF FREEZING

If the fluid of the network is likely to freeze, intend to provide a heating system adapted to the solenoid valve.

MOUNTING

Installation in every position except horizontal pipe with coil towards the bottom.

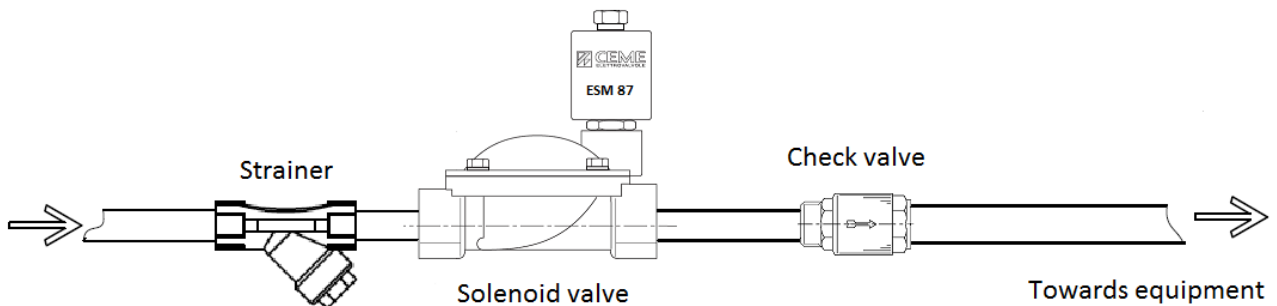
Respect the sense of flow indicated by the arrow marked on the body.

For an use on liquids, the installation of a strainer for upstream protection is recommended.

Check-valve :

A solenoid valve cannot be used as a check-valve. A de-energized normally closed solenoid valve can be crossed by a downstream counterflow. If a both side tightness is required, please add a check-valve downstream of the solenoid valve.

Example



Scaling :

A solenoid valve used on hard water and kept energized during long period can face scaling problem that can block the operation. For this kind of application, please consult.



Conform also to the assembly instructions supplied with the solenoid valve.

Modifications reserved

	SECTORIEL S.A. 45 rue du Ruisseau 38290 SAINT QUENTIN-FALLAVIER – FRANCE Tél : +33 4 74 94 90 70 – Fax : +33 4 74 94 13 95 www.sectoriel.fr / Email : sectoriel@sectoriel.fr	Pages	4/5
		Ref.	FT8700 ENG
		Rev.	03
		Date	05/2019

PILOT OPERATED SOLENOID VALVE CEME 2/2 ESM 87 NO


SPARE PARTS

B 6 - B 6S coil type (Number A)							Connector		
Voltage	230V 50Hz	24V 50Hz	48V 50Hz	110V 50Hz	12V cc	24V cc	T30		
Code	980330	980331	980333	980334	980335	980336	980696		
Voltage	230V 60Hz	24V 60Hz	48V cc	110V cc	12V 50 Hz	380V 50Hz			
Code	980320	980321	980317	980318	980312	980319			
Diaphragm (Number 15)									
DN	3/8"	1/2"	3/4"	1"	1" 1/4	1" 1/2	2"	2" 1/2	3"
NBR	980604		980632	980605	980634	980606	980607	980608	
EPDM	980614		980642	980615	980644	980616	980617		
FPM	980624		980652	980625	980654	980626	980627		
EPDM W		980661	980662	980663					

CEME TRANSLATIONS REFERENCES

∅ Diameter	3/8"	1/2"	3/4"	1"	1" 1/4	1" 1/2	2"	2" 1/2	3"
CEME	8713	8714	8715	8716	8717	8718	8719	8720	8721
SECTORIEL	See WEB catalog								

Modifications reserved

	SECTORIEL S.A. 45 rue du Ruisseau 38290 SAINT QUENTIN-FALLAVIER – FRANCE Tél : +33 4 74 94 90 70 – Fax : +33 4 74 94 13 95 www.sectoriel.fr / Email : sectoriel@sectoriel.fr	Pages	5/5
		Ref.	FT8700 ENG
		Rev.	03
		Date	05/2019